

WHY THE FLIPPER?



Covered by
U.S. Patent Number 8,596,944



Indianola, MS

Office 662-569-3341 / William Lipsey 662-207-2414 / Bill Lipsey 662-207-2600

www.lipseygintech.com

FLIPPER FACTS

FACT #1

The Flipper is the **ONLY** system that will work on roller bed, chain bed, and moving floor feeders.

FACT #2

There are **51 Flippers** in **13 states**
More than all other unwrappers combined!

FACT #3

Over 700,000 bales were ginned on Flippers in 2015

FACT #4

100% of Flipper customers would rather gin round modules than regular modules

FACT #5

Flipper customers typically gin **1 to 2 bales per hour more** on round modules

FACT #6

The Flipper is **less than 1/2 the cost** of other unwrappers

FACT #7

The Flipper gives you eyes on every side of the module,
reducing contamination risk!

FACT #8

The Flipper is the SAFEST & SIMPLEST method!
It has **1 moving part**

Why the Flipper™?

RESPONSIBILITY

#1

Gins have a responsibility to their Round Module customers to provide a legitimate, safe, reliable, and sustainable method for handling their cotton.

WITHOUT CONTAMINATION.

#2

Gins have a responsibility to all other customers to maintain a

CONTAMINATION FREE REPUTATION

with buyers and mills.

MILLIONS ARE AT STAKE!

\$



\$

U.S. Patent Number 8,596,944

VISUAL INSPECTION



**IS THE ONLY WAY TO GUARANTEE
NO PLASTIC WRAP**



ENDS UP IN HERE



U.S. Patent Number 8,596,944

THE FLIPPER™

IS THE ONLY METHOD THAT ALLOWS FULL
VISUAL INSPECTION OF THE ENTIRE MODULE.



Two workers stand safely on OSHA spec catwalks.

They can see all sides of the module as they remove
the wrap.

U.S. Patent Number 8,596,944

End of module before it is flipped



Front side of wrap removed

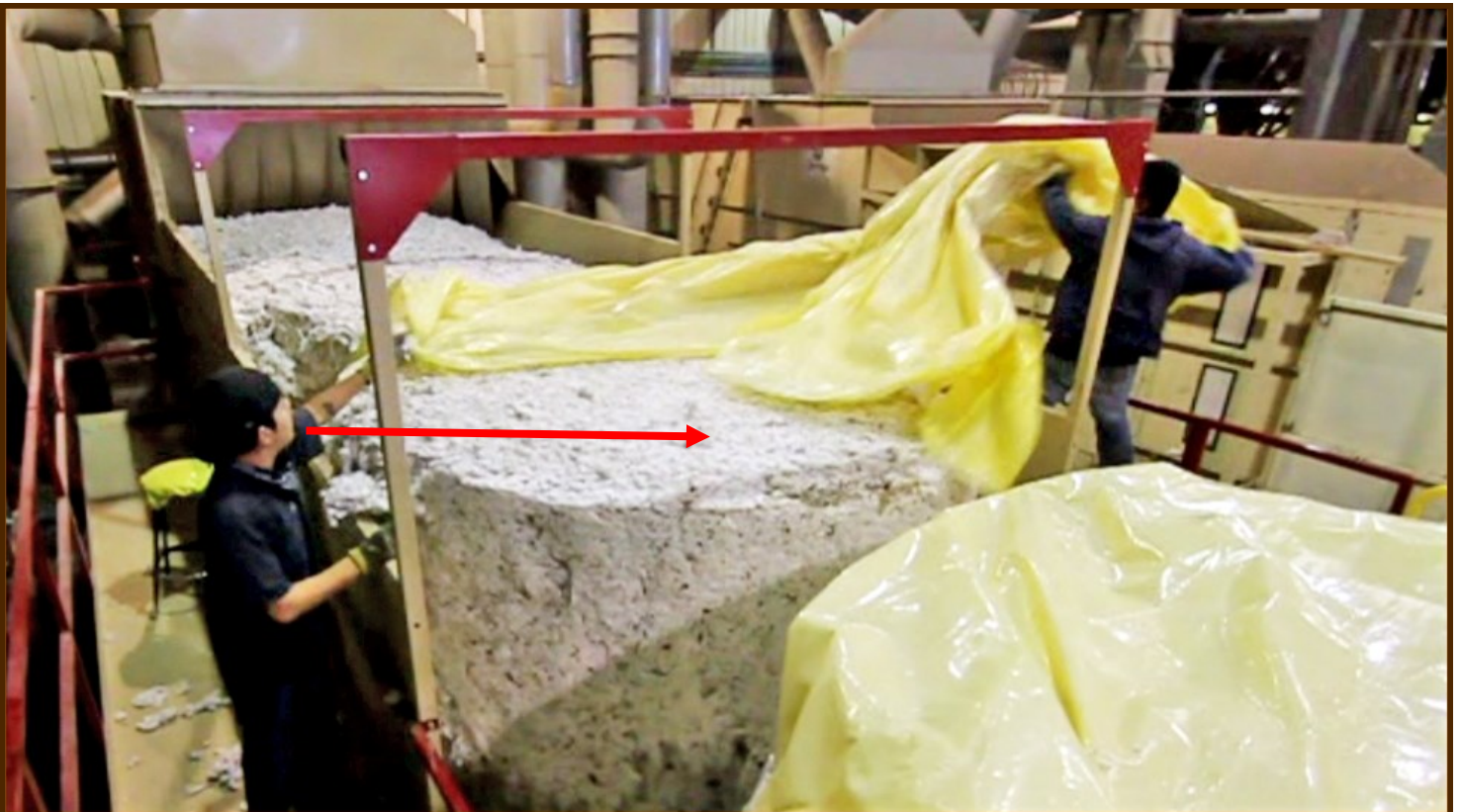


U.S. Patent Number 8,596,944

Back side of wrap removed



Wrap completely removed



U.S. Patent Number 8,596,944

The wrap is popped off the top
without ever cutting it completely.



Contamination FREE!



U.S. Patent Number 8,596,944

WHAT AM I BUYING?

WHEN YOU BUY A FLIPPER™, YOU ARE GETTING A
SAFE, RELIABLE, SUSTAINABLE, LONG TERM,
PROVEN SYSTEM

FOR GINNING ROUND MODULES.



Individually designed for your gin!

U.S. Patent Number 8,596,944

CUSTOM DESIGN

EVERY PIECE OF YOUR FLIPPER™ WILL BE
CUSTOM DESIGNED TO FIT YOUR MODULE FEEDER.

HERE'S WHAT YOU GET

**The Flipper™ device
designed to work
perfectly with your feed
conveyor.**



ALL HYDRAULIC HOSES AND PIPES INCLUDED!



Hydraulic power unit with electric valve designed for the Flipper™.

U.S. Patent Number 8,596,944

CUSTOM DESIGNED SIDE BOARDS



**ALL NECESSARY
GUARDS & ENCLOSURES**



**ALL CATWALKS &
HANDRAILS**



U.S. Patent Number 8,596,944

GINS HAVE A SAFETY RESPONSIBILITY TO EMPLOYEES AND CUSTOMERS



UNSAFE!



One Accident Could
SHUT YOUR GIN DOWN!

THE FLIPPER™ IS SAFE

OSHA SPEC CATWALKS & HANDRAILS



Your workers are SAFE!

U.S. Patent Number 8,596,944

DO I NEED A STEADY-FLOW? (FEED CONTROL)

!!NO!!

**WITH THE FLIPPER YOUR STANDS WILL STAY FULL
WITH OR WITHOUT A STEADY-FLOW**



You have complete control over how close you stack the modules.

**You will GIN MORE COTTON by flipping the modules on the end
than by ginning them “sausage-style”.**

DOES THE FLIPPER WORK ON CHAIN BED FEEDERS?

!!YES!!

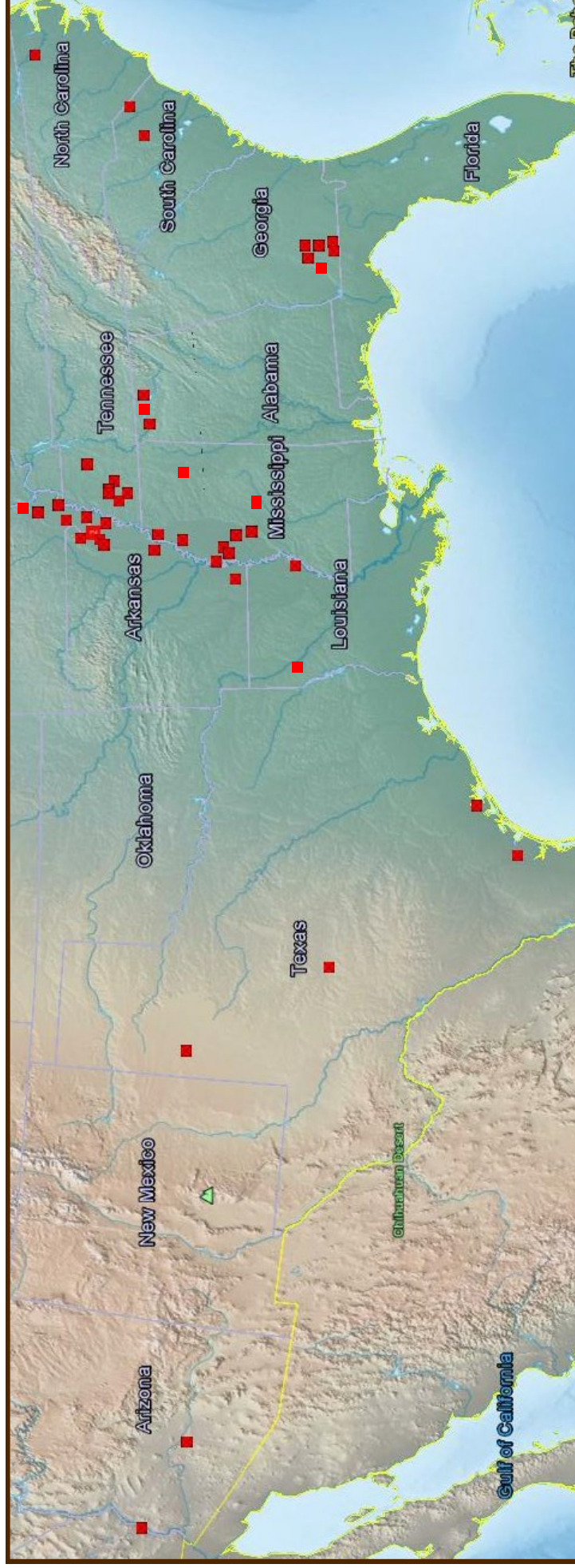
**WE CURRENTLY HAVE 4 FLIPPERS WORKING
FLAWLESSLY ON CHAIN BED FEEDERS.
WITH AND WITHOUT STEADY-FLOWS**



**The Flipper bar is
designed to fit
between the
chain beds.**



THE FLIPPER™ IS PROVEN!
51 UNITS IN 13 STATES
MORE THAN ALL OTHER
UNWRAPPERS COMBINED!



U.S. Patent Number 8,596,944

CAN I BUILD MY OWN FLIPPER™?

The Round Module Flipper™ is **Patented**
and covered by

U.S. Patent Number 8,596,944.

The invention is exclusively licensed to Lipsey
GinTech, Inc.. Lipsey GinTech, Inc. will seek royalty
damages and an injunction to stop use against
ANYONE that has made, used, or sold a device after
July 21, 2011 that infringes on any of the
claims of the patent.

**This includes anyone building a device for their
own use.**

WHO IS LIPSEY GINTECH?

William
Lipsey



Bill
Lipsey

1926—William Lipsey's step-grandfather, Henry Bourn, owns steam powered gins in Oak Vale and Prentiss, MS

1934—Henry Bourn dies & leaves the gins to WT Lipsey, William's father

1938—WT Lipsey buys a new Lummus gin and installs it in Prentiss, MS

1953—WT Lipsey buys another Lummus gin to handle cotton harvested by Ford strippers, Prentiss, MS

1965—William Lipsey, Henry Lipsey, & cousin Eddie Dale buy a modern Lummus gin, Prentiss, MS

1971—Following Hurricane Camille in 1969 and reduced cotton acreage, William moves the new Lummus gin to Indianola, MS and begins building and renovating gins in the off season

1980's—William runs his gin, installs 30 UD presses, builds new gins and renovates gins

1990—Lipsey GinTech is formed, William applies for a Patent on his TrashMax, the Patent was issued, 102 units have been built

1997—Lipsey GinTech builds its first Walking Floor® module feeder, 36 more followed

2010—William discovers the prototype flipper built by John England, an agreement is made and the Patent is applied for, since then over 50 Flippers have been built and are in operation

**WT Lipsey Gin
&
Ford Tractor
Dealership
1951**



SOME OF OUR HISTORY

6 Complete Gins Built

30 UD Presses Installed

11 Major Gin Renovations

102 TrashMax Units

Alabama	7
Arkansas	15
Florida	1
Georgia	15
Louisiana	10
Mexico	1



Mississippi	41
Missouri	4
New Mexico	1
N. Carolina	1
Oklahoma	1

37 Walking Floor™ Module Feeders

Alabama	7
Arkansas	4
Georgia	1
Louisiana	3
Mississippi	13
Missouri	1



N. Carolina	1
Oklahoma	2
S. Carolina	1
Tennessee	1
Texas	3

51 Flippers™ U.S. Patent Number 8,596,944

Alabama	3
Arizona	1
Arkansas	8
California	1
Georgia	7
Louisiana	2



Mississippi	8
Missouri	6
N. Carolina	2
Oklahoma	1
S. Carolina	2
Tennessee	6
Texas	4

BOTTOM LINE?
WE KNOW COTTON !



28 Reasons to buy a Flipper™

1. The Flipper works on roller beds, chain beds, and moving floor feeders.
2. The Flipper gives view of all sides of the module, eliminating contamination.
3. With the Flipper you never completely cut the wrap in two, so there is no tail left.
4. The Flipper is simple reliable. It only has one moving part.
5. The Flipper will feed 90+ bales/hour.
6. The Flipper is custom designed to fit YOUR FEEDER.
7. The Flipper only takes 2 men to operate.
8. The Flipper allows you to load modules with a module truck, not one at a time with a loader.
9. The Flipper only has 2 hydraulic cylinders.
10. The Flipper uses no hydraulic motors or rotary actuators.
11. No hydraulic lines above the cotton to leak and contaminate cotton.
12. The Flipper uses no PLC's or computer controls.
13. You can gin standard modules without any modifications.
14. You can gin standard modules on the off chance the Flipper needs service.
15. The Flipper leaves no gap to close up.
16. You will not have to widen your feeder.
17. You will not have to split your conveyor.
18. You will not have to install more drives on your conveyor.
19. You will not have to raise your roof.
20. The Flipper provides the most consistent feed to the gin, even without a feed control.
21. The Flipper is easy to install. It usually takes about 1-1/2 to 2 days.
22. The Flipper is inexpensive to install.
23. Catwalks with handrails are included.
24. Sideboards are included.
25. Guards are included.
26. The Flipper is the safest method.
27. The Flipper is time tested and proven.
28. !!! PRICE!!!

U.S. Patent Number 8,596,944

Indianola, MS

Office 662-569-3341 / William Lipsey 662-207-2414 / Bill Lipsey 662-207-2600

www.lipseygintech.com

CONTACT



NOW!!

Indianola, MS

Office 662-569-3341 / William Lipsey 662-207-2414 / Bill Lipsey 662-207-2600

www.lipseygintech.com